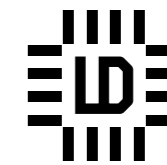


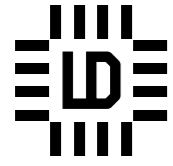
SELECTED





## DESIGNED BY LEADING DANISH DESIGNERS

The new collection from Linie Design is both exclusive and Nordic - streamlined, simple and playful with contrasts. Therefore, the high quality collection consists of a wide range of opposite, though harmonious patterns. All rugs are handmade by Indian adult weavers with safe working conditions. We also care for kids in the area, and therefore 350 local children attend the Linie Design School.

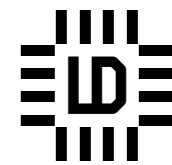


## LD SELECTED IS TRULY CRAFTSMANSHIP

All achievements are handmade by master artisans, who have perfected their unique skills through generations. Individual process means, that inaccuracies are natural parts of the original artwork. Most of the rugs can be produced in custom made sizes.







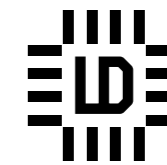
## WARM LOOK, WARM SENSATION

Our exquisite felt rugs have a raw and crisp style, though allowing lots of space for comfort and cosiness. Wild meets soft, when the structured surface raises in pure elegance giving the room a tactile impression and a silencer effect.



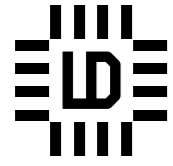






## LD SELECTED MEANS DANISH DESIGN

Rugs full of grace and attitude. The delicate and symphonic colours frame uncompromising design principles and let classic weave into the modern. Simplicity and cogency are fundamentals for the pure style result.

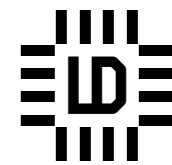


## IT TAKES MORE THAN HALF A MILLION KNOTS

Though look is simple, a hand-knotted rug is not simple to make. All rugs are beautiful combinations of Danish design innovation, traditional techniques, Nordic delicate colors and nature's contrastive elements. Everywhere in the world the rugs fit modern living.





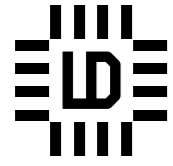


## REFLECTIONS OF LIFE

LD Selected contains two viscose rugs, namely Simplicity and Grace. The materials in those beautiful rugs have unique and fully utilized characteristics. Experience how the rugs catch and reflect daylight and observe the change of the impression according to placement and time of the day.







# STYLISH DESIGN HAS A GLOBAL LANGUAGE

We have done the first part of the dialogue. Now it is your turn to make the rug tell the unique story about your individual lifestyle.











**SPARKLER**  
HAND-KNOTTED  
NZ WOOL/VISCOSE  
SIZES:  
170/240  
200/300



AQUA

**NOAM**  
HAND-KNOTTED  
NZ WOOL/VISCOSE  
SIZES:  
170/240  
200/300



STONE



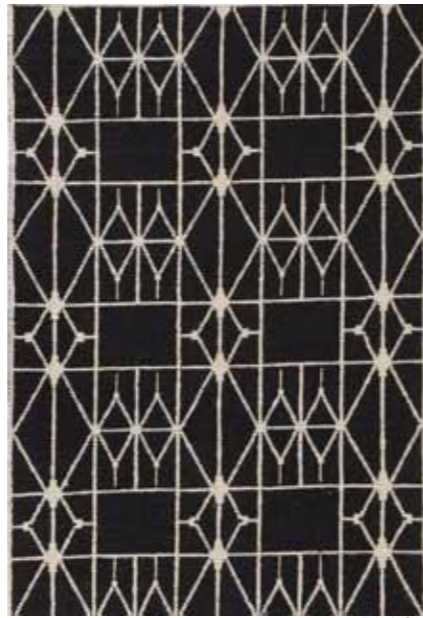
AQUA



LT. GREY

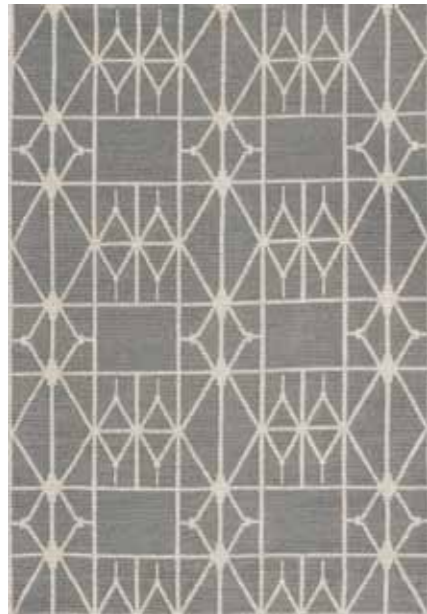


**META**  
 HAND-WOVEN  
 WOOL  
 SIZES:  
 140/200  
 170/240  
 200/300



BLACK

**CRUSH**  
 HAND-CRAFTED  
 WOOL  
 SIZES:  
 140/200  
 170/240  
 200/300



GREY

**FARAO**  
 HAND-WOVEN  
 NZ WOOL/VISCOSE  
 SIZES:  
 140/200  
 170/240  
 200/300



CHARCOAL



GREY



SAND



GREY



WHITE



ROSE



MINT



**COMFORT**  
 HAND-WOVEN  
 NZ WOOL  
 SIZES:  
 140/200  
 170/240  
 200/300



BEIGE



ANTHRACITE



PETROL



SILVER

**TRISQUARE**  
 HAND-KNOTTED  
 NZ WOOL/VISCOSE  
 SIZES:  
 170/240  
 200/300



BLUE

**SIMPLICITY**  
 LOOM-KNOTTED  
 VISCOSE  
 SIZES:  
 140/200  
 170/240  
 200/300



BEIGE



GREY



OLIVE



WHITE



ROSE



SILVER



**GRACE**  
 LOOM-KNOTTED  
 VISCOSE  
 SIZES:  
 140/200  
 170/240  
 200/300



**UNIVERSE**  
 HAND-KNOTTED  
 NZ WOOL  
 SIZE:  
 150Ø



MULTI



AQUA



GREEN



ORANGE

**MISTY**  
 HAND-KNOTTED  
 NZ WOOL/VISCOSE  
 SIZES:  
 170/240  
 200/300



LT. GREY



PEACH



YELLOW



PETROL



POWDER



SILVER



**REGARD**  
 HAND-WOVEN  
 NZ WOOL  
 SIZES:  
 140/200  
 170/240  
 200/300



GREY

**TAVIRA**  
 HAND-WOVEN  
 NZ WOOL  
 SIZES:  
 140/200  
 170/240  
 200/300



AQUA

**ICELAND**  
 HAND-WOVEN  
 NZ WOOL  
 SIZES:  
 140/200  
 170/240  
 200/300



POWDER

**SIBERIA**  
 HAND-WOVEN  
 NZ WOOL  
 SIZES:  
 140/200  
 170/240  
 200/300



CHARCOAL



GREY



WHITE



GREY



SAND



STONE

FURNITURE AND ACCESSORIES: BY NORD, CARL HANSEN, CINNOBER, FERM LIVING, FREDERICA FURNITURE, GRID, GUBI, HAY, HOWE, ISABEL AHM, KARAKTER, LIGHTYEARS, LOUISE ROE, MARIA BRUNN, MONTANA MOBILE, MUUTO, STILLEBEN, THE OAK MEN, WALNUT STREET



**LINIE DESIGN**

GRANLYET 7, 3540 LYNGE, DENMARK

TEL. +45 4818 9066

FAX +45 4818 9275

WWW.LDSELECTED.DK



LINIE DESIGN ACCEPTS NO LIABILITY OR RESPONSIBILITY FOR ANY ERRORS OR OMISSIONS IN THE CONTENT

**SIBERIA GREY**